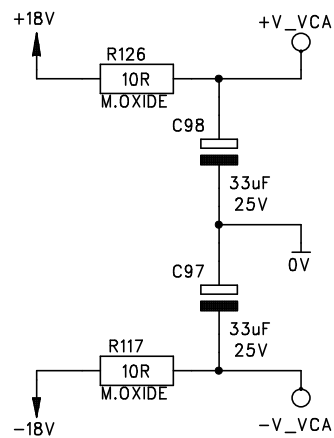
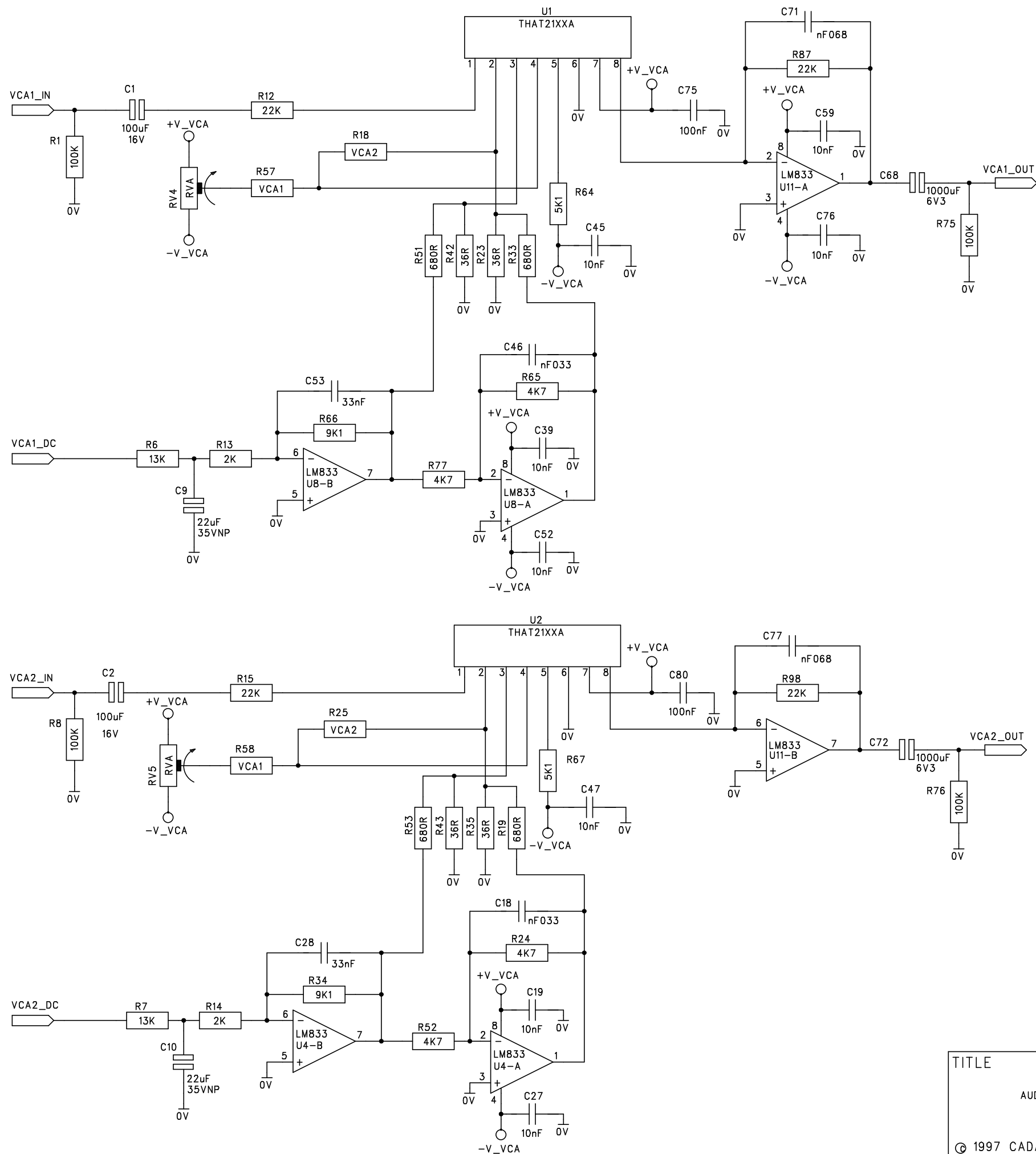


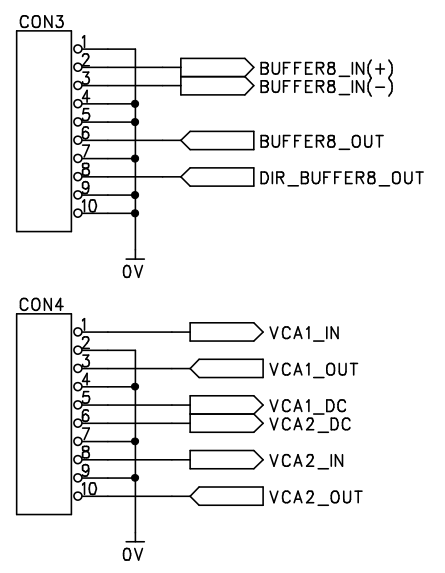
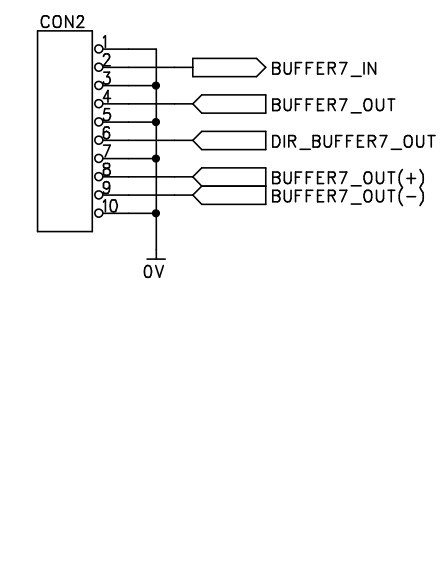
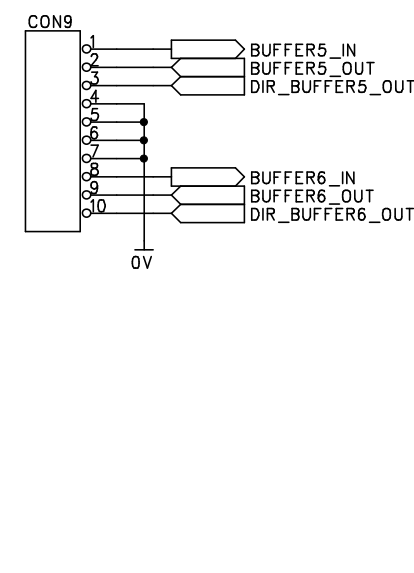
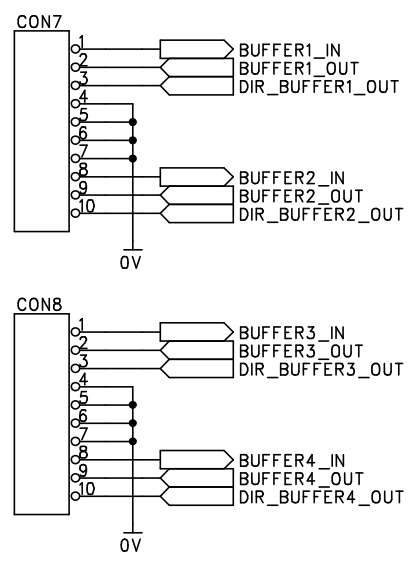
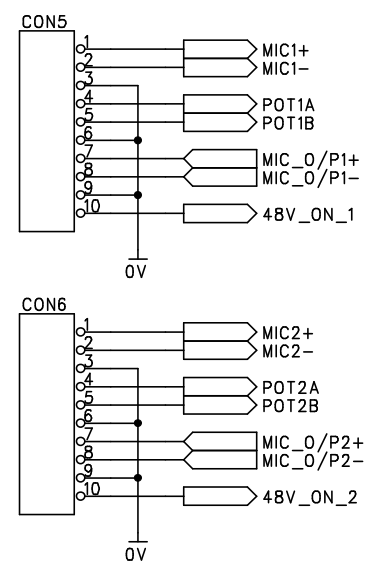
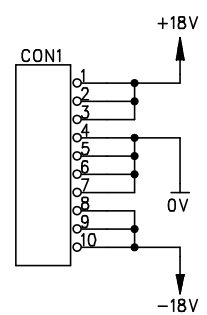
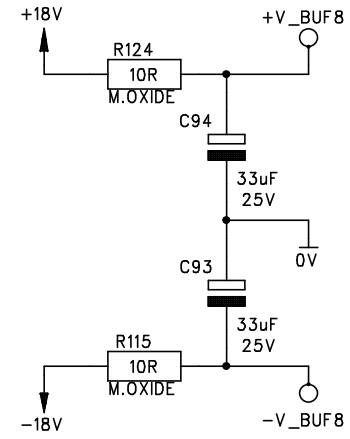
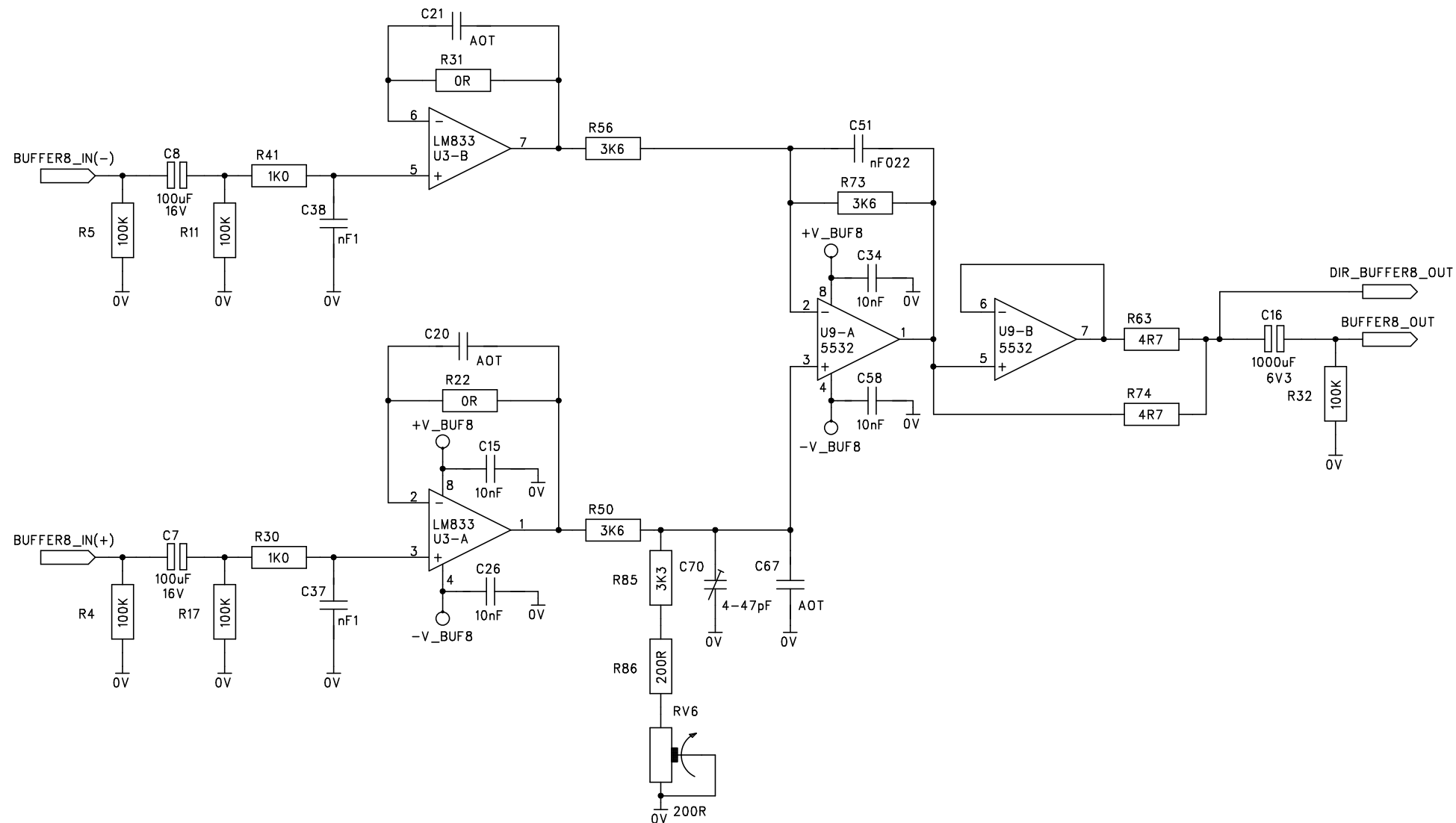
BUFFER CONFIGURATION TABLE			
TYPE	GAIN	RA	RB
A	0dB	--	--
C	10dB	4K7	4K7
H	20dB	560R	--
L	6dB	5K1	--
M	4.5dB	7K5	--
R_OUT=LINK WHEN NON TURBO R_OUT=4R7 WHEN TURBO VERSION			

TITLE	DESIGNER	NF	DRG	DATE	DRG	DATE
	DRAWN	NF	1	23.06.97	5	18.01.01NF
	CHECKED	XX	2	30.09.97	6	
	APPROVED	XX	3	09.07.99NF	7	
	1st ISSUE		4	01.06.00	8	
© 1997 CADAC ELECTRONICS LTD					CADAC DRWG No. A3.7823	
					SHEET 3 OF 7	



	RVA	VCA1	VCA2	DISTORTION (@0dB) %	
THAT2151	50K	470K	51R	Typ 0.004	Max 0.02
THAT2180LA	---	---	---	Typ 0.005	Max 0.01
THAT2180LB	---	---	---	Typ 0.01	Max 0.02
THAT2181LA	50K	680K	---	Typ 0.0025	Max 0.005
THAT2181LB	50K	240K	---	Typ 0.004	Max 0.008

TITLE	DESIGNER	NF	DRG	DATE	DRG	DATE
	DRAWN	NF	1	23.06.97	5	18.01.01NF
	CHECKED	XX	2	30.09.97	6	
	APPROVED	XX	3	09.07.99NF	7	
	1st ISSUE		4	01.06.00	8	
CADAC DRWG No. A3.7823					SHEET 6 OF 7	



H1

TITLE		DESIGNER	NF	DRG ISS	DATE	DRG ISS	DATE
AUDIO SUB BOARD CONNECTORS		DRAWN	NF	1	23.06.97	5	18.01.01NF
		CHECKED	XX	2	30.09.97	6	
		APPROVED	XX	3	09.07.99NF	7	
		1st ISSUE		4	01.06.00	8	
© 1997 CADAC ELECTRONICS LTD		CADAC DRWG No. A3.7823					SHEET 7 OF 7